



Quay West Facade Pictured



CARIBBEAN RANGE

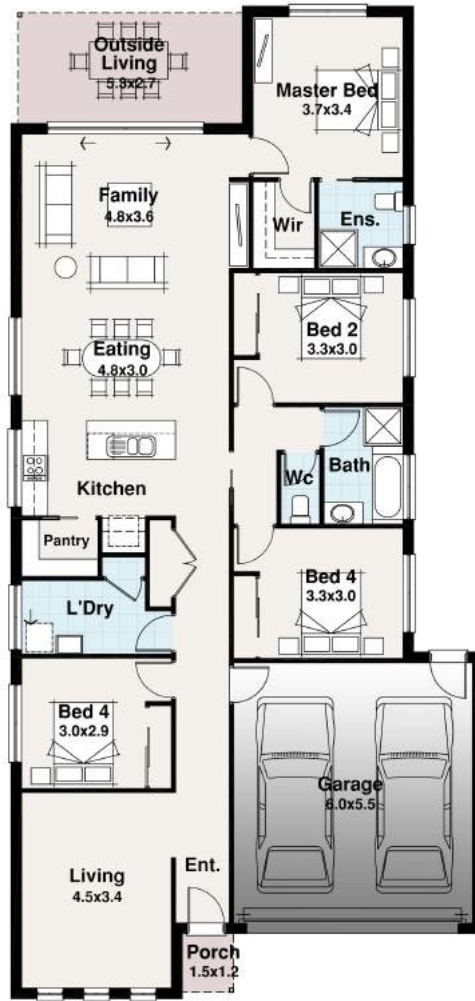
Exclusive products available in our Zero Deposit First Homes Range Only. Conditions Apply.



BLOCK 28.00m

12.00m

- 4
- 2
- 2
- 2



The Port Of Spain

Width 10.85m
Length 22.82m

Residence	162.80	m ²
Porch	1.58	m ²
Garage	36.29	m ²
Outside Living	17.50	m ²
TOTAL	215.03	m²
	23.14	sq

The Port Of Spain

Offering 4-bedrooms, a very smart kitchen with Butler's Pantry and ample Outside Living, the Port of Spain fits a whole lot in at around 215m².

Designed to suit 12m wide blocks this home will cater for most block types on new estates in order to allow the owner to vary their choice of land.