

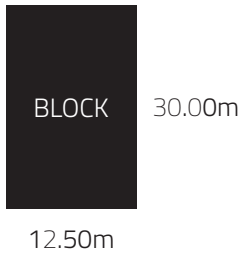






Traditional Facade Pictured

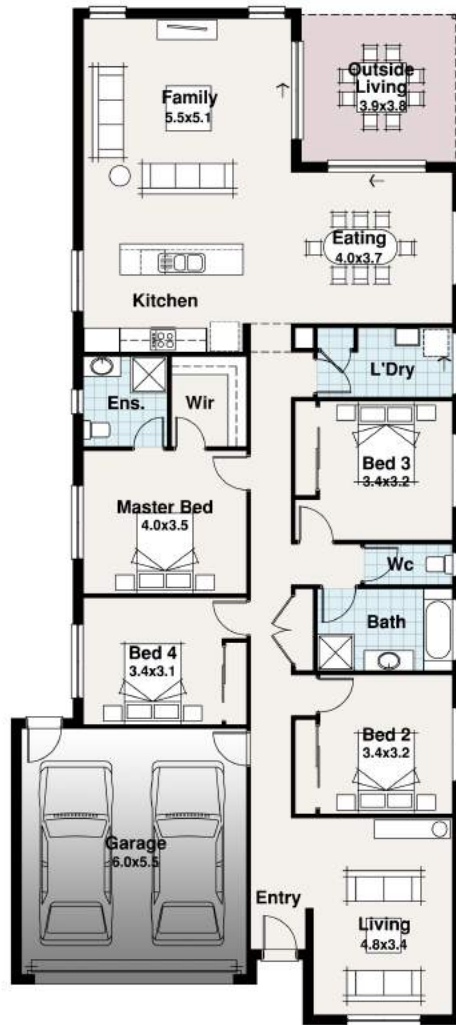


# CARIBBEAN RANGE

**Exclusive products available in our Zero Deposit First Homes Range Only. Conditions Apply.**



-  4
-  2
-  2
-  2



# The Nassau

**Width** 11.00m  
**Length** 24.79m

Residence	187.73	m <sup>2</sup>
Garage	36.26	m <sup>2</sup>
Outside Living	14.73	m <sup>2</sup>
<b>TOTAL</b>	<b>238.72</b>	<b>m<sup>2</sup></b>
	<b>25.70</b>	<b>sq</b>

## The Nassau

With 4-Bedrooms, 2-Living areas plus an ample Outdoor Living area and heaps of storage the wonderful Nassau offers it all. With a very family orientated design everyone can enjoy their own space in this savvy design that caters for the modern household.